

# TRACK RENOVATION PHASE IV: Running Rail, Switch Steel, Tie & Fastener Replacement

ANTHONY RIVIERE & KELI DAVIS  
PROJECT MANAGERS

---

MARTA Riders' Advisory Council (RAC)  
January 5<sup>th</sup> , 2021



# Rail components are subject to extreme stress and have a limited life span:

Rail Fasteners



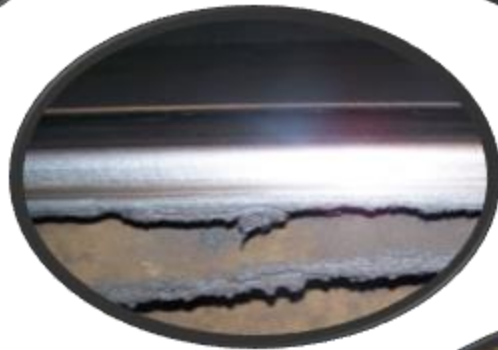
Turnouts



Contact Rail & Cover Board



Running Rail



Cross Ties



Switches



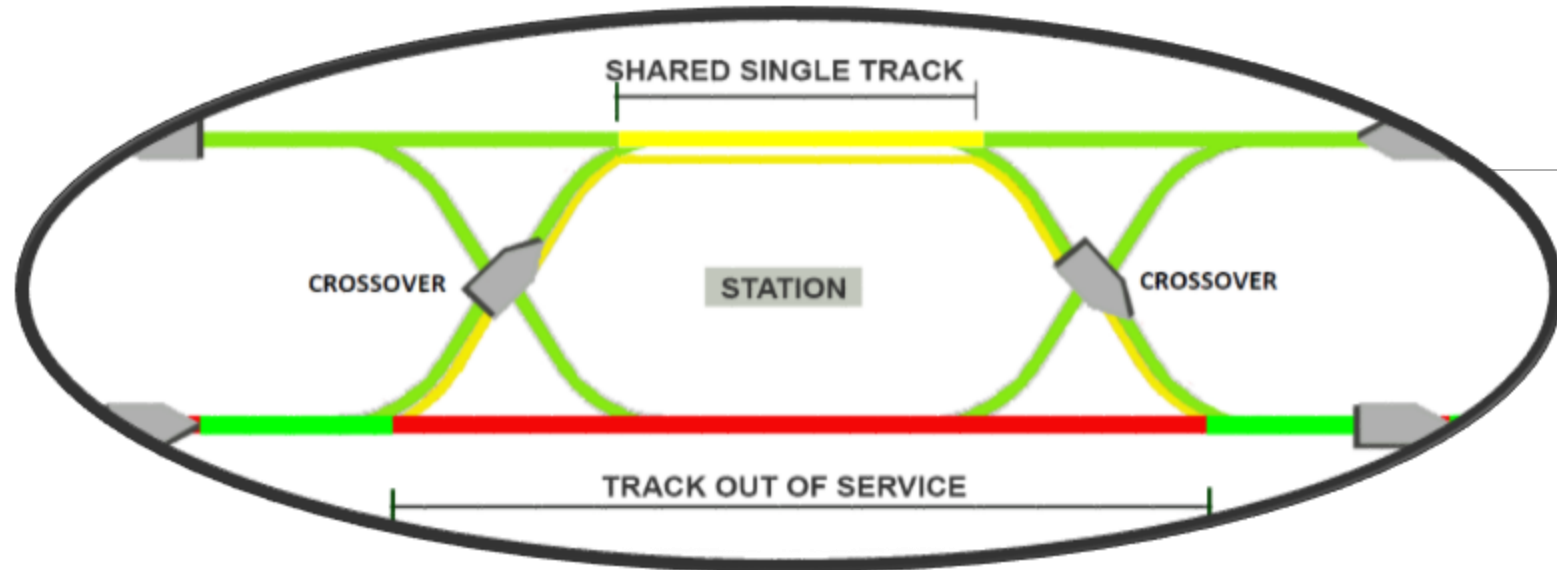
Ballast



Crossovers



The replacement of most of these components can be performed while the system is in operation. This is accomplished by single tracking around the area.



Since single tracking creates delays in service, Operational SOPs defines when these events may be implemented.

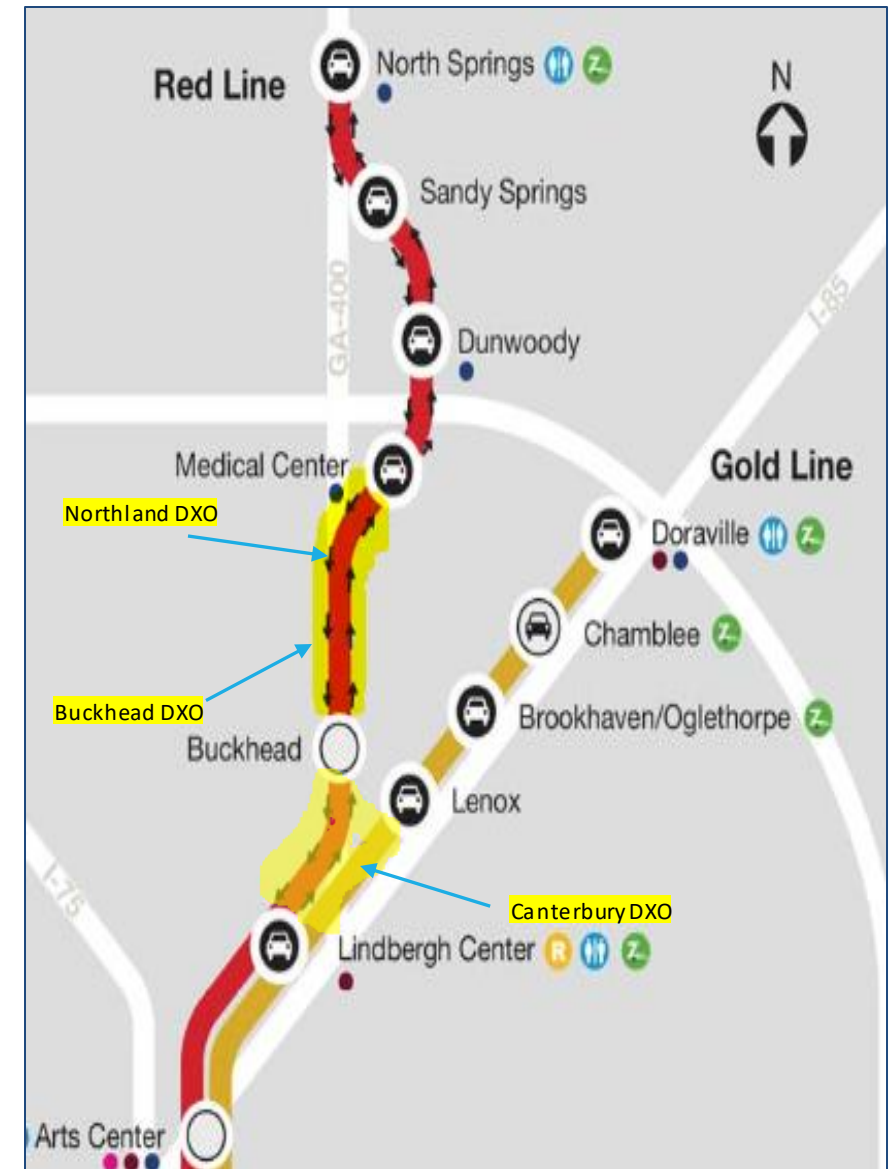
Type	Hrs.	Start / End Times
<b>Long Weekend</b>	54	Fri 9:30P - Mon 4:00A
<b>Short Weekend</b>	30	Fri 9:30P - Sun 4:00A Sat 9:30P - Mon 4:00A
<b>Week Night</b>	6	9:30P - 4:00A
<b>Non-Revenue</b>	2	2:00A - 4:00A

# The Authority has a phased approach to Rail Renovation and Replacement.

Project	Dates	Running Rail	Fasteners	Cross Ties	Contact Rail	Switch Steel	Crossovers	Turnouts
TR (Phase I)	1999 – 2003	✓	✓	✓				
TR II	2003 – 2006		✓	✓	✓	✓		
TR III	2011 - 2015	✓	✓	✓	✓		✓	✓
TR IV	2018 – 2026	✓	✓	✓	✓	✓	✓	✓

The most challenging part of the TR IV project is the replacement of three (3) diamond crossovers (DXO):

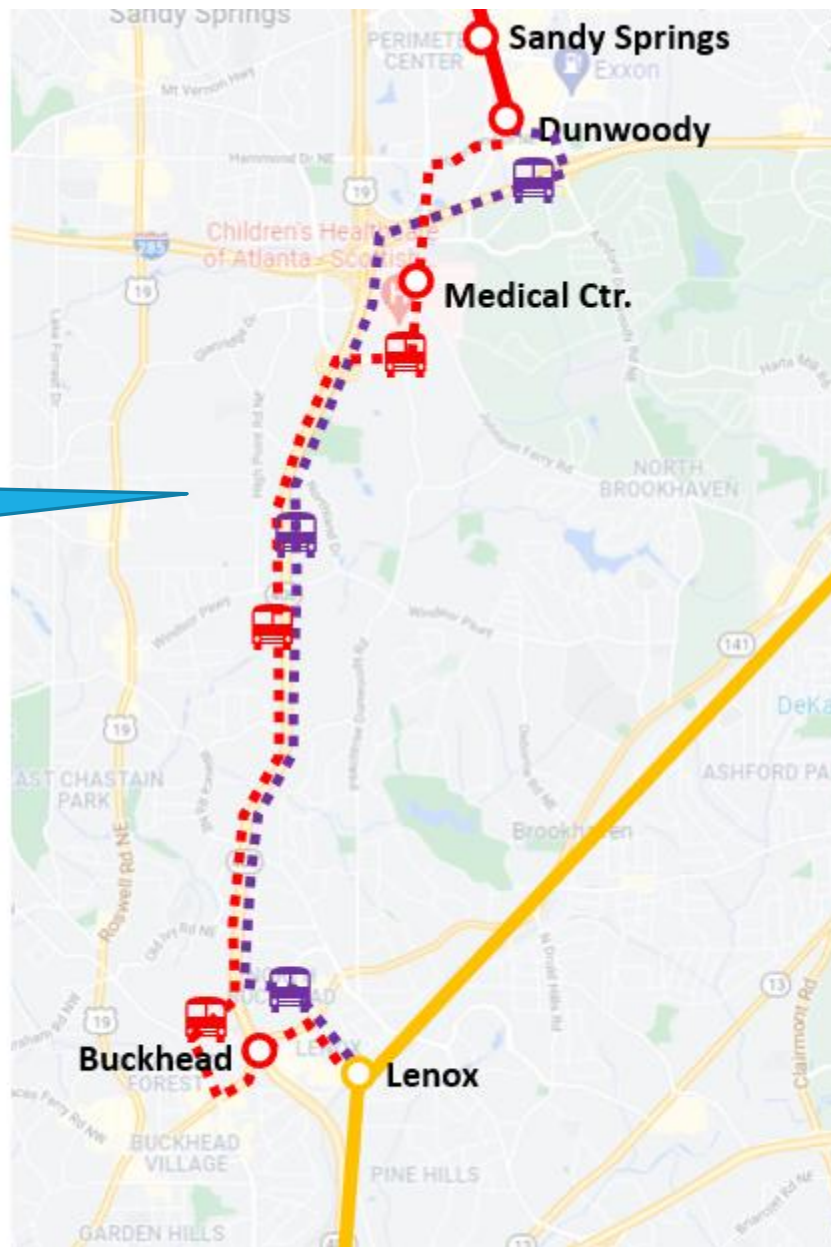
Location	Dates
Canterbury DXO	February 11 – 17, 2021
Northland DXO	February 18 – 24, 2022
Buckhead DXO	February 2023







Bus Bridge between  
Lenox Station  
& Dunwoody Station



 = Local Bus Bridge serving:

- Lenox
- Buckhead
- Medical Center
- Dunwoody

 = Express Bus Bridge serving:

- Lenox
- Dunwoody





