

BeltLine Corridor Environmental Study



BeltLine

Public Workshop

April/May 2009

What Will We Be Doing At Tonight's Workshop?

Agenda



- **BeltLine Project Overview**
- **Breakout Sessions to Discuss Service Types and Project Alignments**
- **Summary of Comments from Breakout Groups**
- **Next Steps**

BeltLine Project Overview

What is the Project About?

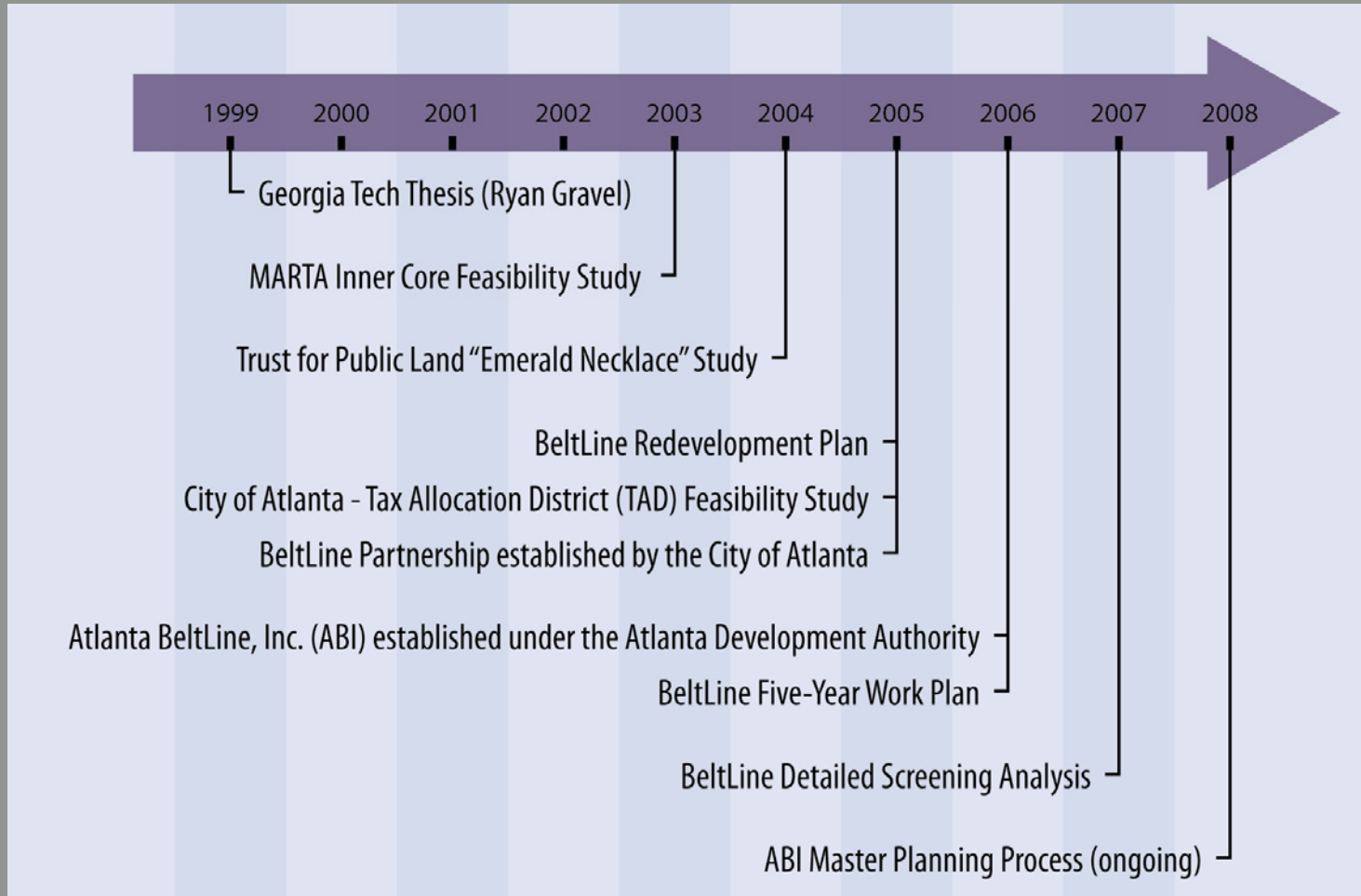


- Rail Transit System
- Multi-use Trails
- Parks and Public Spaces
- Streets and Streetscapes
- Economic Development and Housing



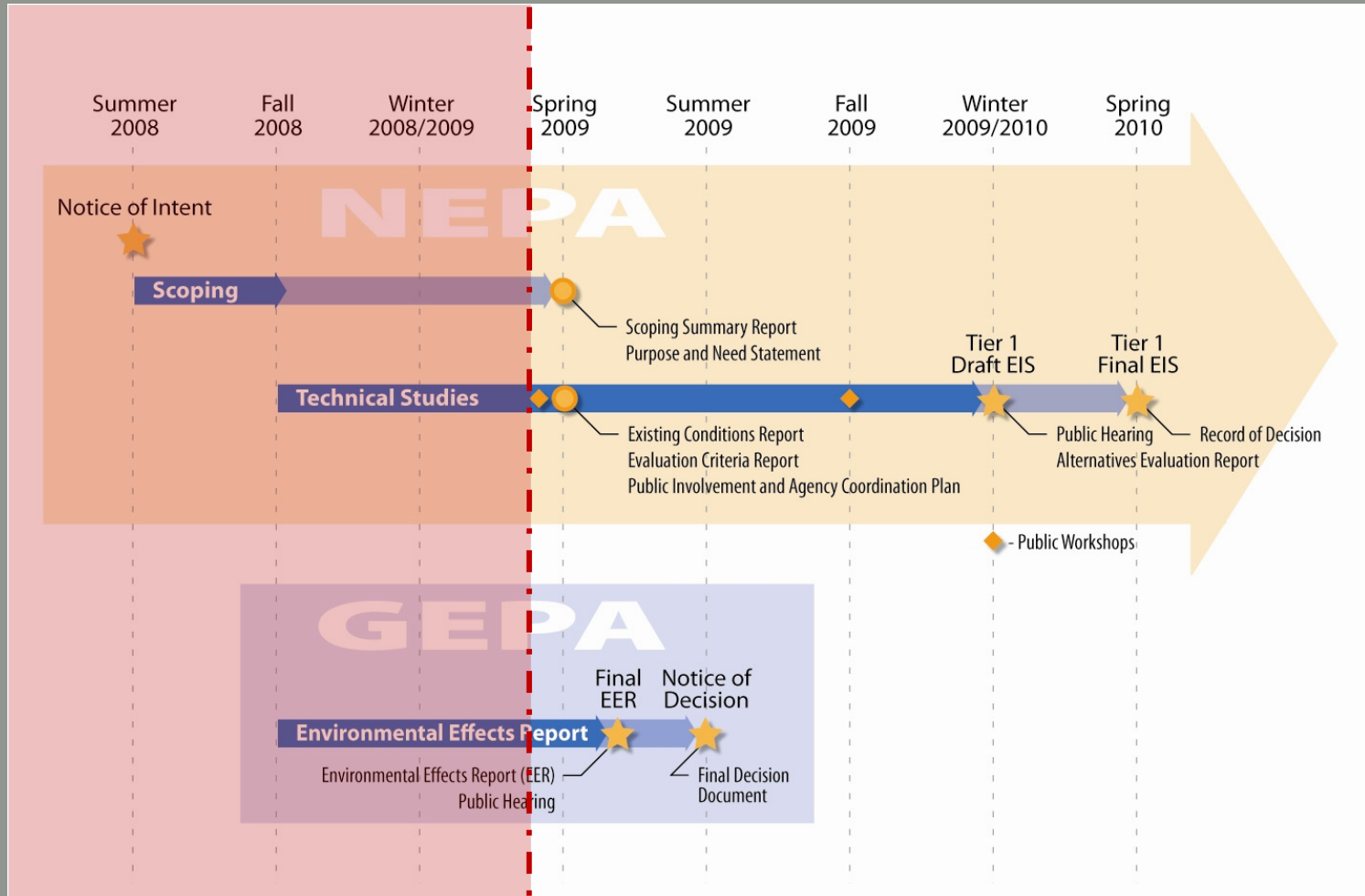
BeltLine Project Overview

How Did We Get to This Point?



BeltLine Project Overview

Environmental Study Process



BeltLine Project Overview

Environmental Study Outcomes



- Develop transit and trail alignment and connections
- Identify and preserve station location areas
- Document environmental impacts
- Refine capital and operating costs
- Determine transit service features

BeltLine Project Overview

Environmental Study and Subarea Master Planning

Master Plans

- Parks / Greenspace
- Trail Alignment Alternatives
- Access Points / Transit and Trails
- Street Framework
- Historic Resources
- Development Patterns

EIS Process

- Conceptual Engineering
- Environmental Impact
- Transit and Trail Service Features
- Mobility Impacts
- Capital and Operating Cost

Outcome of EIS

- Transit Alignment
- Transit Characteristics
- Station Location Areas
- Trail Alignment
- Corridor Design

BeltLine Project Overview

What Improvements Are Being Considered?



Trails Element

- 33 miles of multi-use trails including spurs
- Accommodates bicyclists and pedestrians
- Connects to 40 parks and several other trails

BeltLine Project Overview

Trail Features



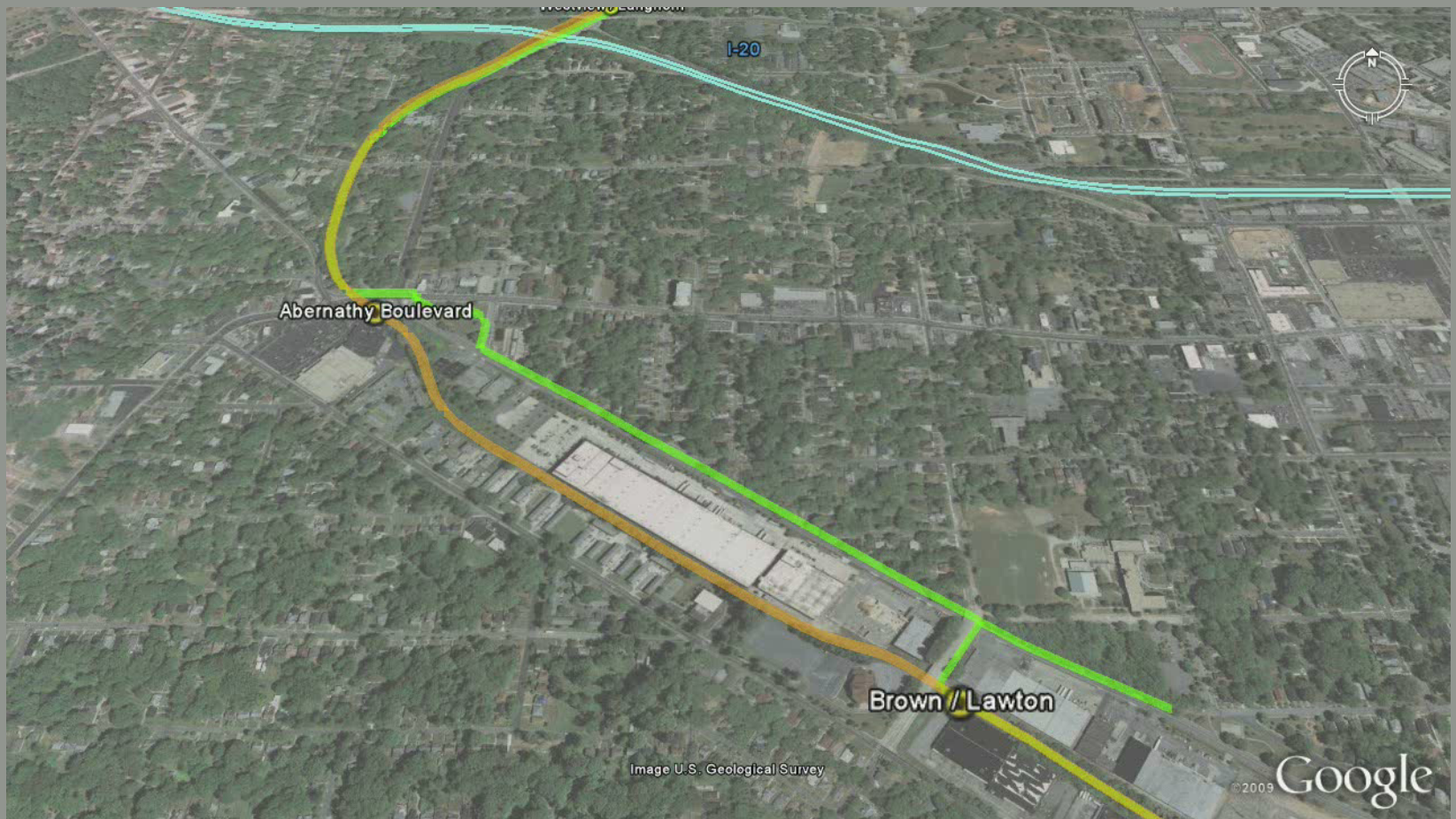
BeltLine Project Overview

Trail Alignments



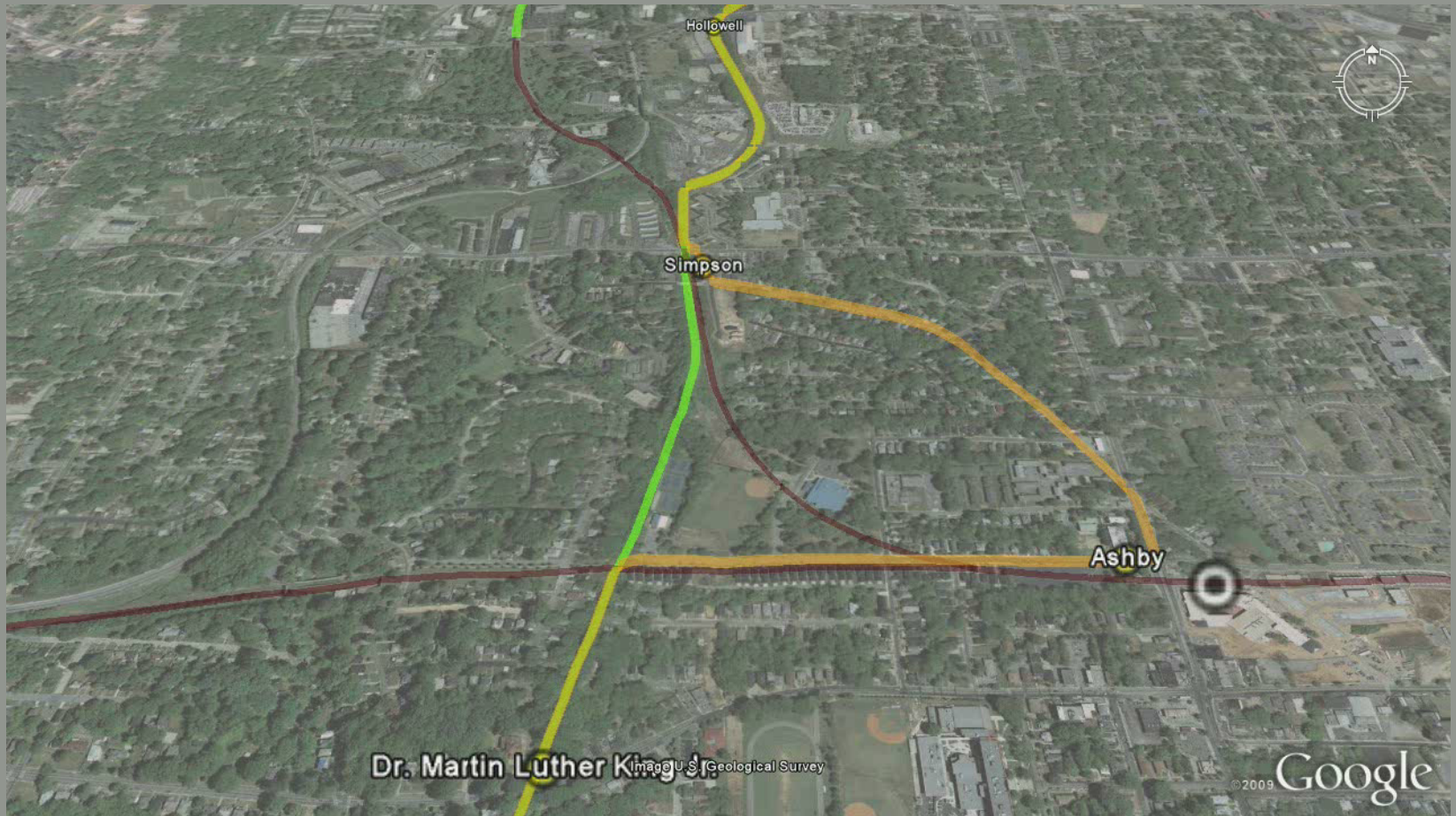
BeltLine Project Overview

Trail Alignments



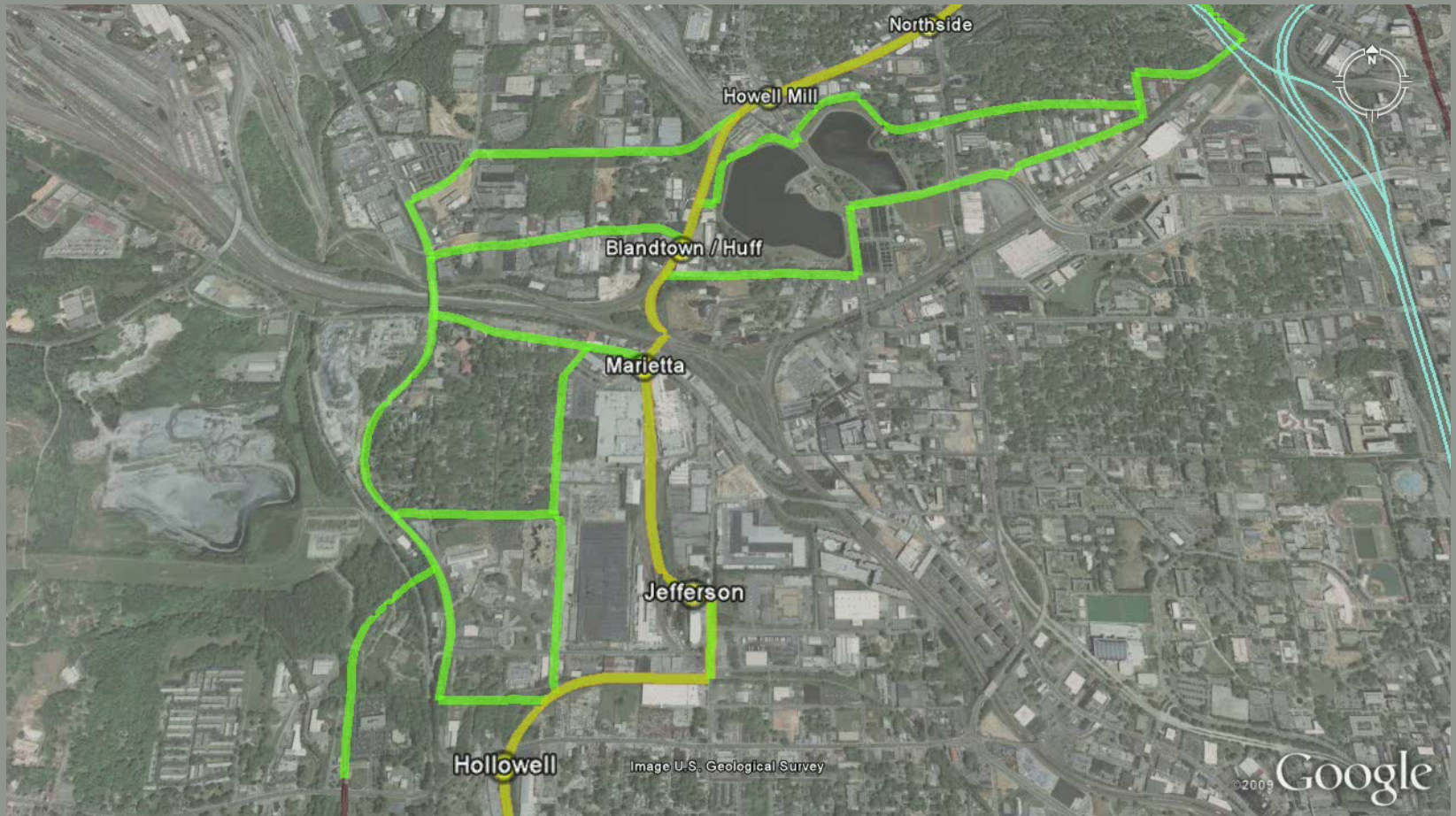
BeltLine Project Overview

Trail Alignments



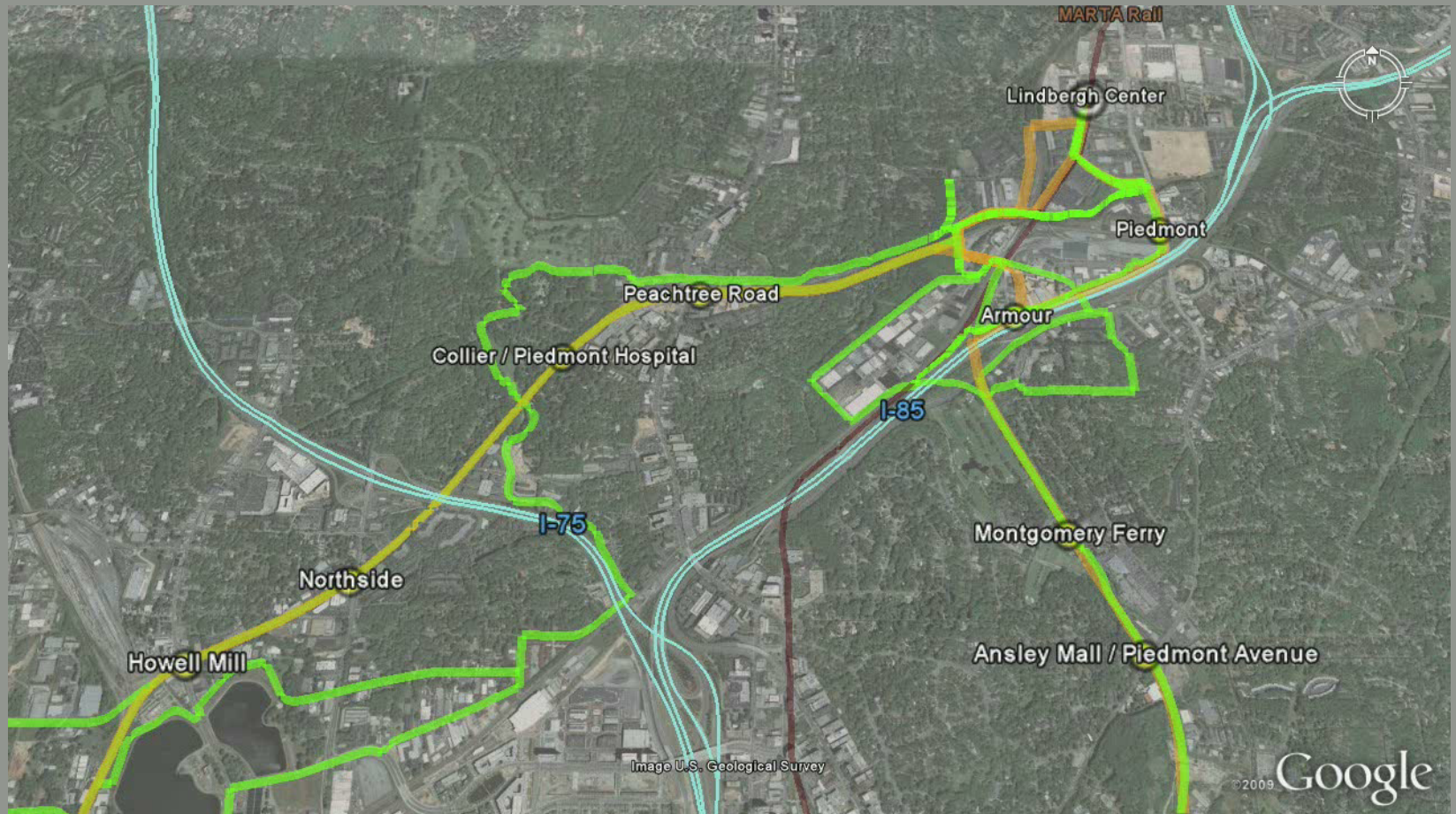
BeltLine Project Overview

Trail Alignments



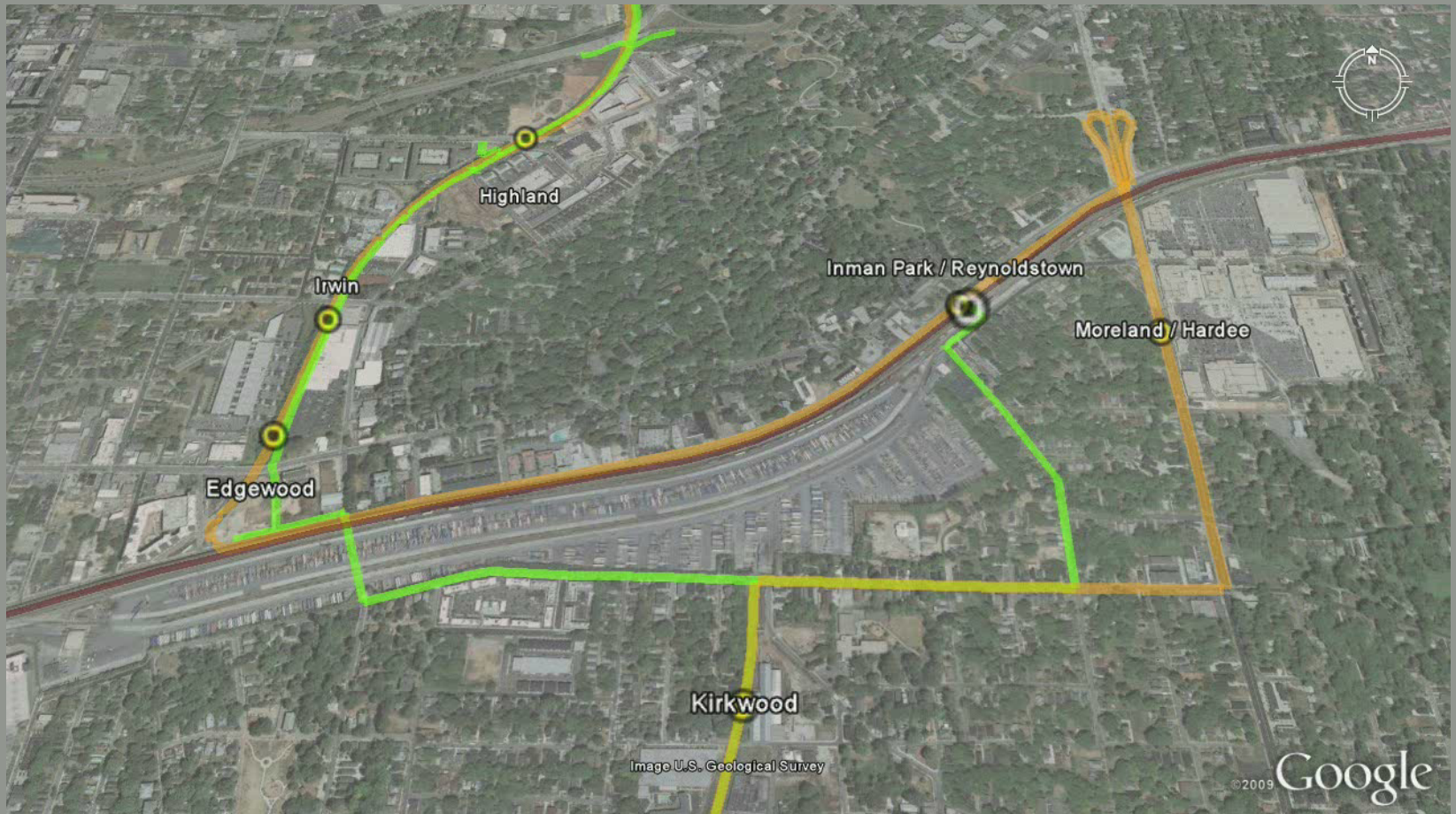
BeltLine Project Overview

Trail Alignments



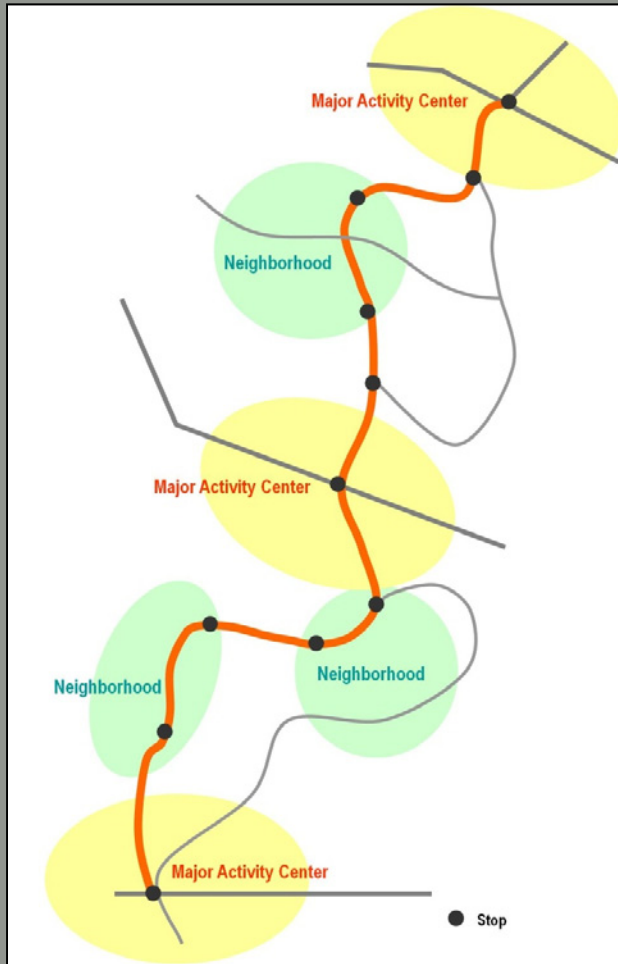
BeltLine Project Overview

Trail Alignments



BeltLine Project Overview

What Type of Transit Service is Best for the BeltLine?

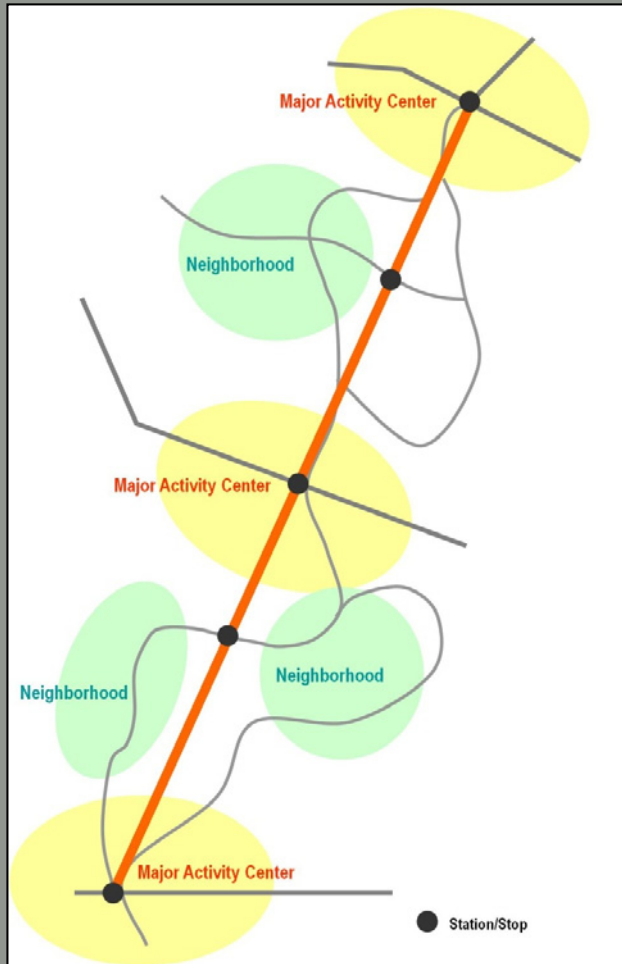


Local service

- Extensive coverage
- Shorter trips
- Slower speeds
- Smaller and lower capacity vehicles

BeltLine Project Overview

What Type of Transit Service is Best for the BeltLine?



Regional service

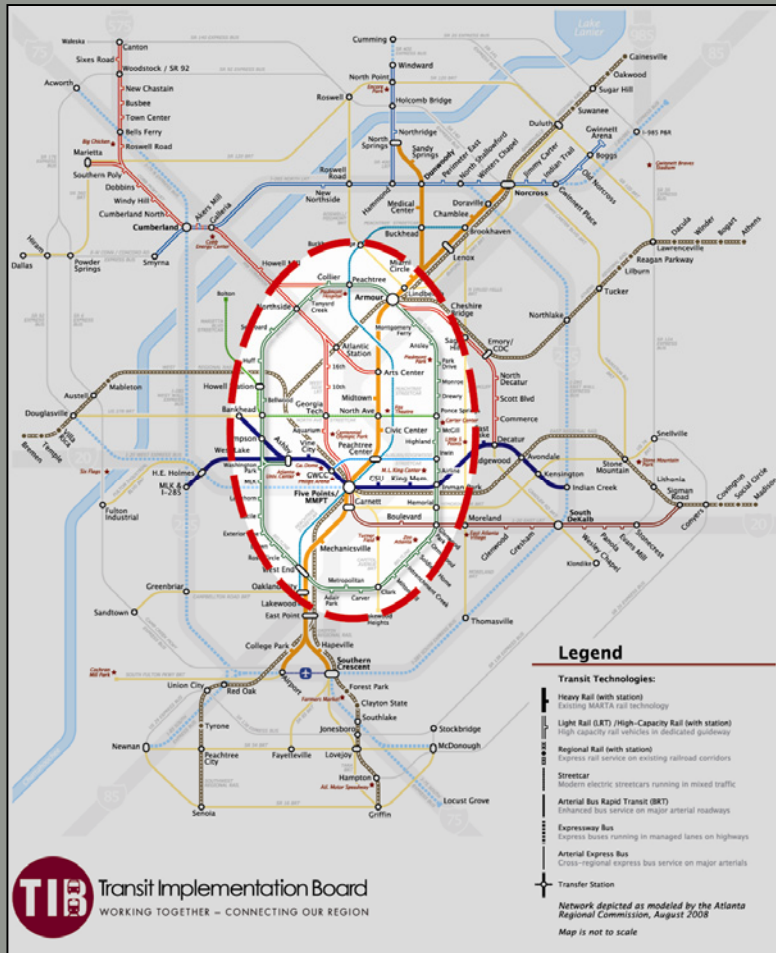
- Fewer stops and less coverage
- Longer trips
- Faster speeds
- Larger and higher capacity vehicles

BeltLine Project Overview

What Improvements Are Being Considered?

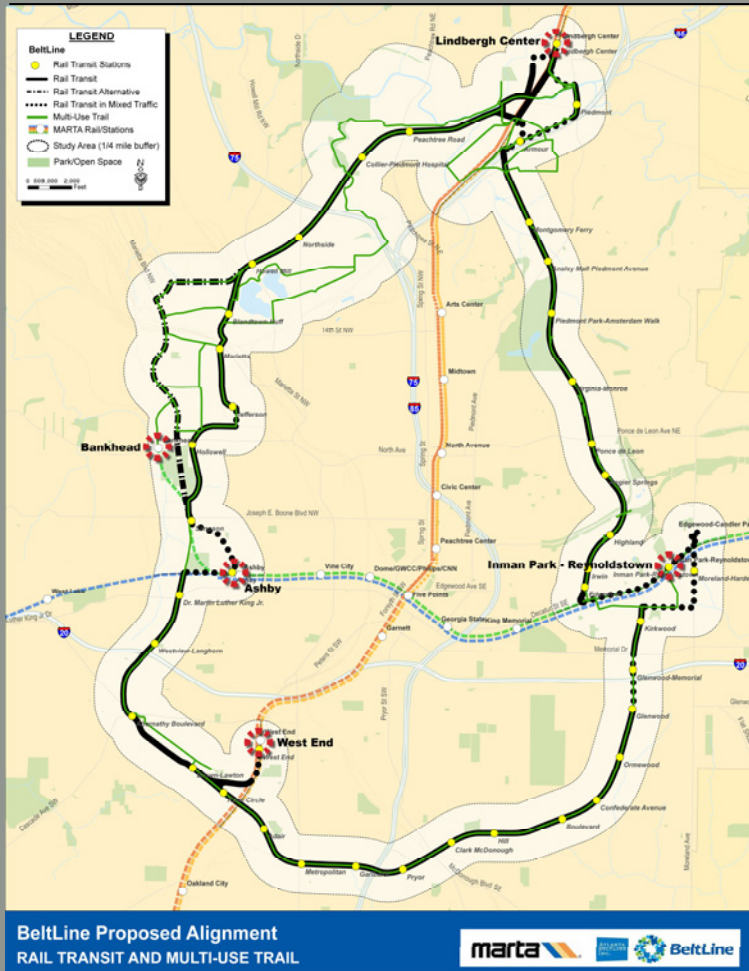
BeltLine is just one part of a much larger system which includes:

- Heavy Rail
- Commuter Rail
- Light Rail
- Streetcar
- Express and Regional Bus



BeltLine Project Overview

What Improvements Are Being Considered?



Transit Element

- Rail transit in exclusive right-of-way and mixed traffic
- 41 Potential BeltLine Stations
- Connects to MARTA rail stations
- Uses high capacity transit technology

BeltLine Project Overview

Transit Features

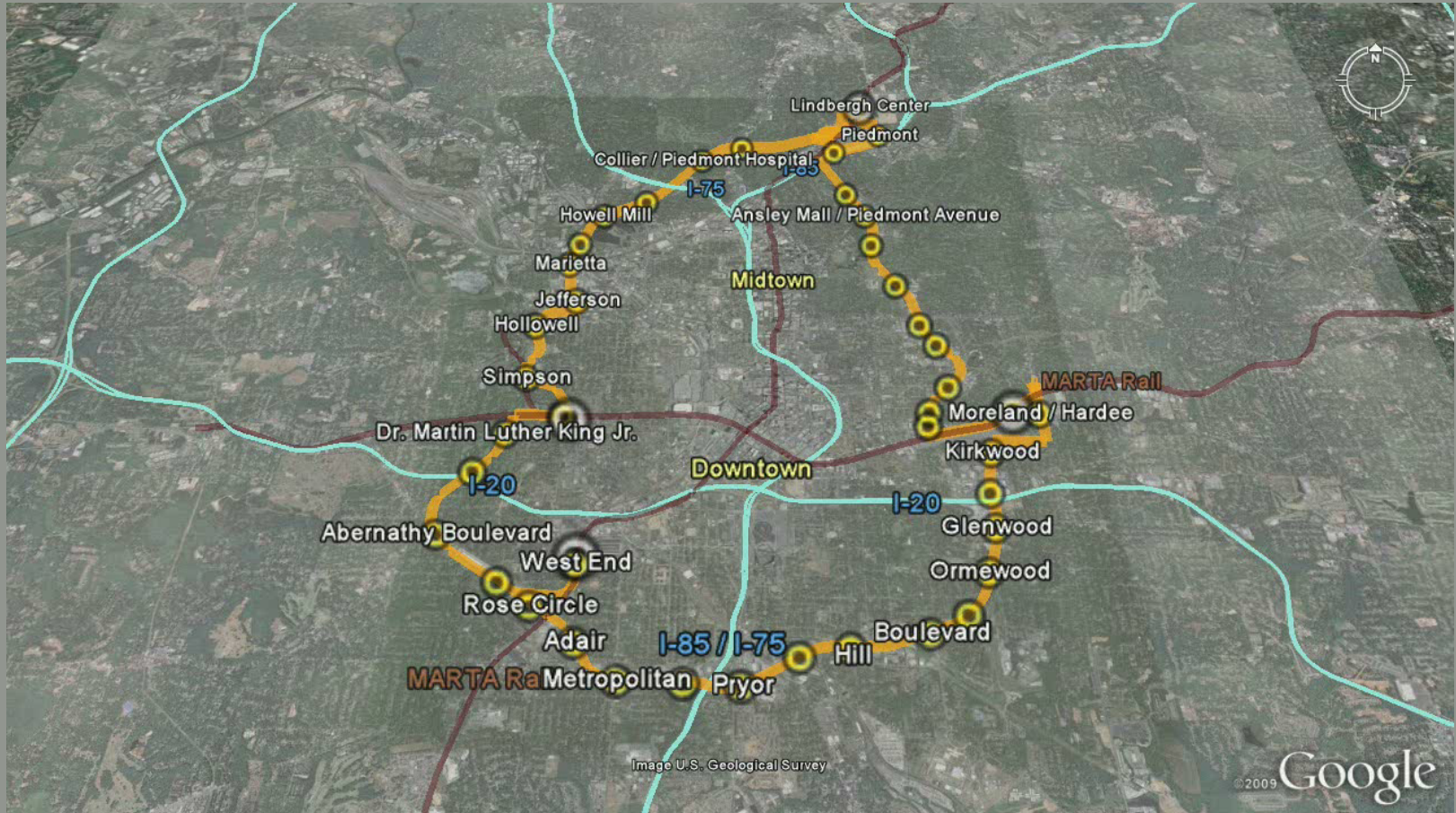


Rail Transit
In Exclusive Right-of-Way

Bilbao, ES

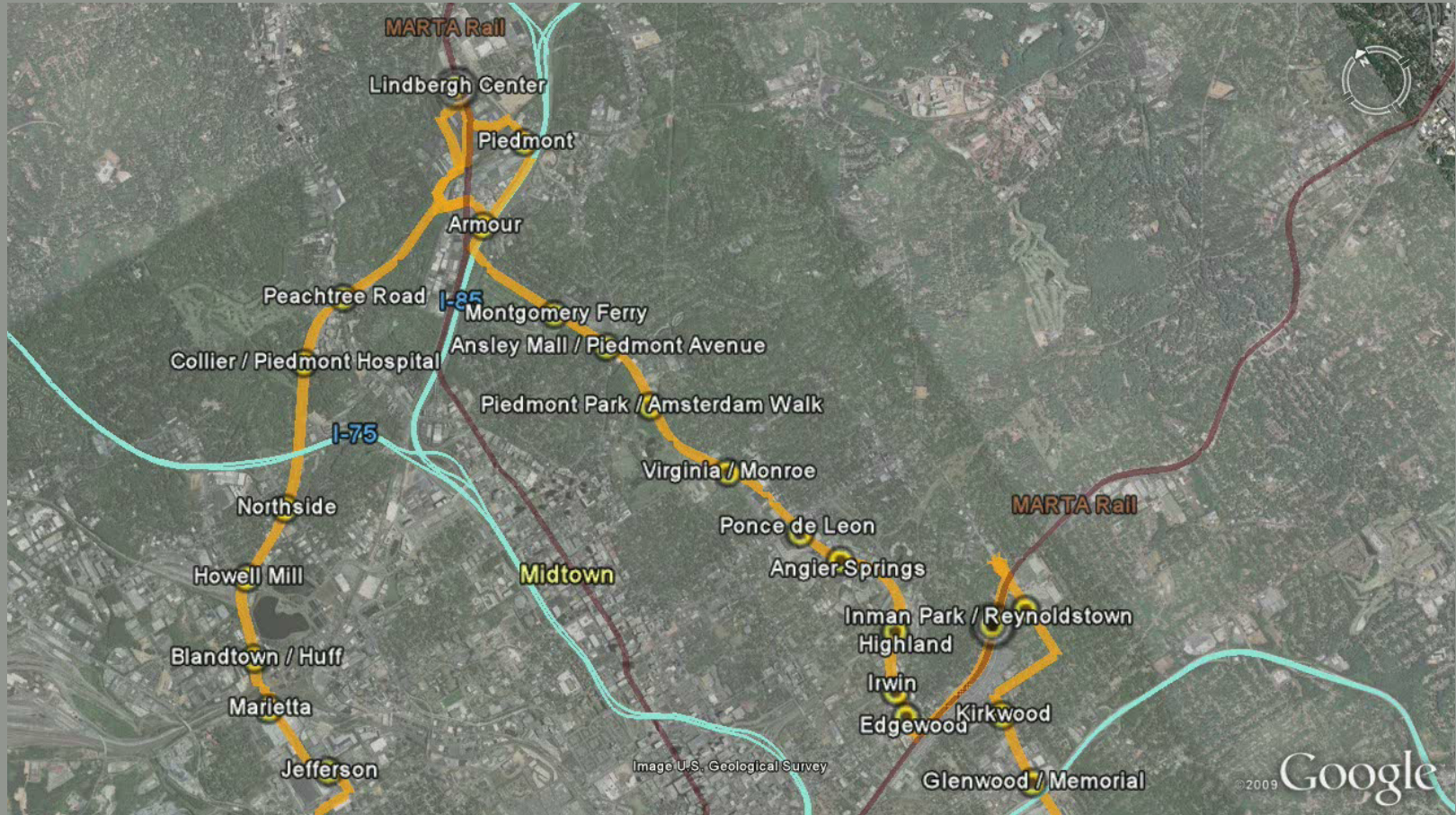
BeltLine Project Overview

Project Alignment and Station Locations



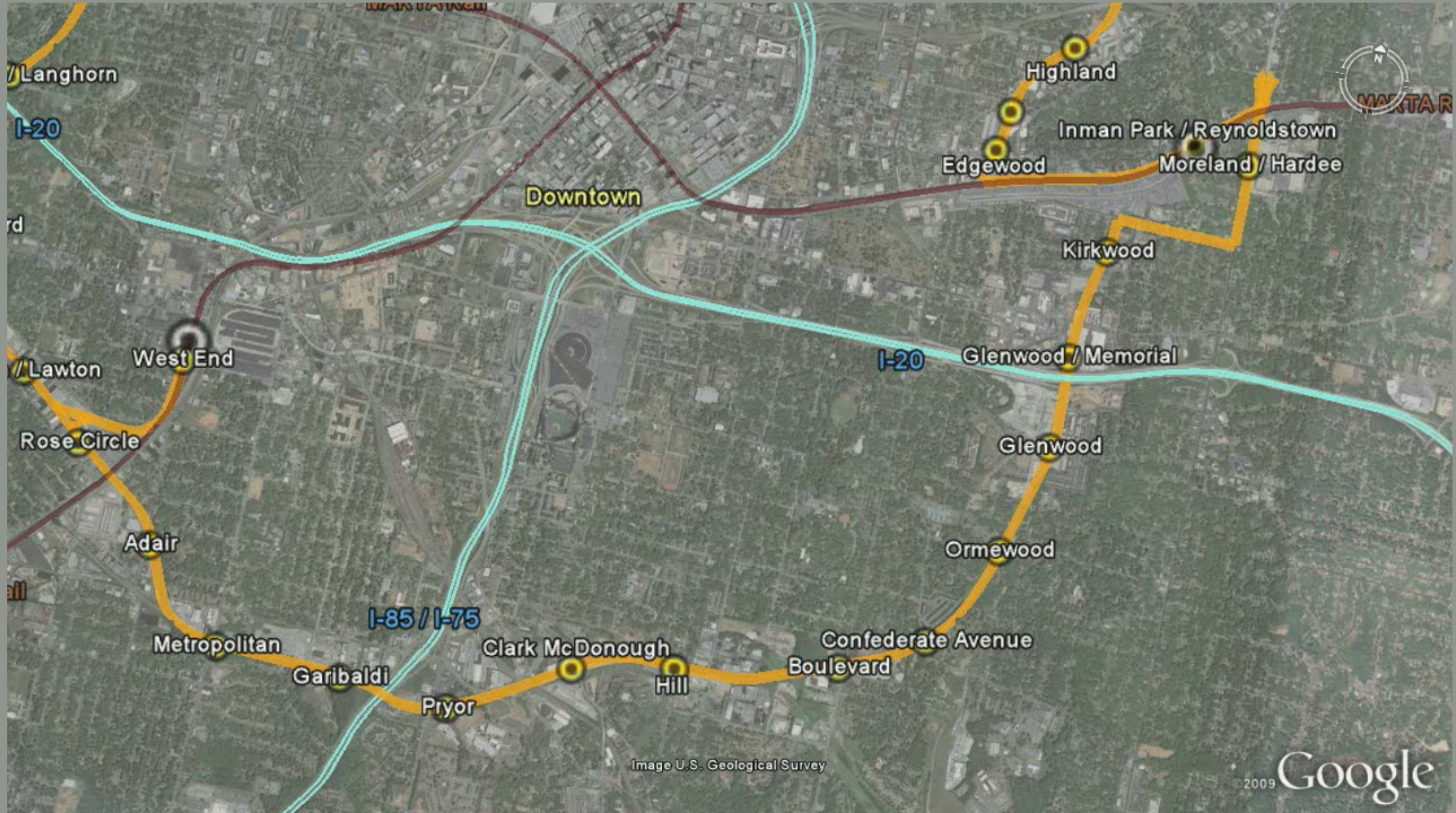
BeltLine Project Overview

Project Alignment and Station Locations



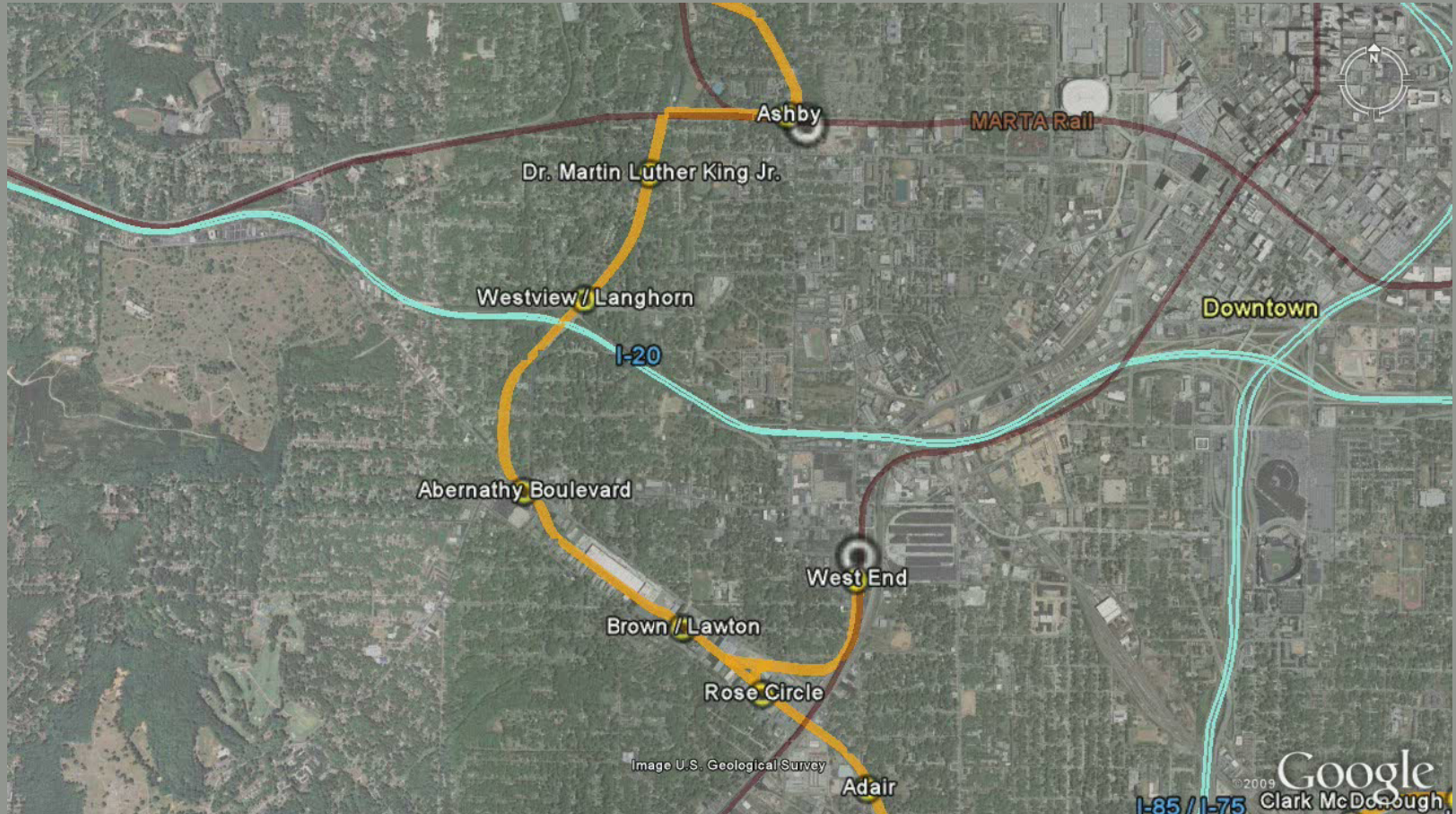
BeltLine Project Overview

Project Alignment and Station Locations



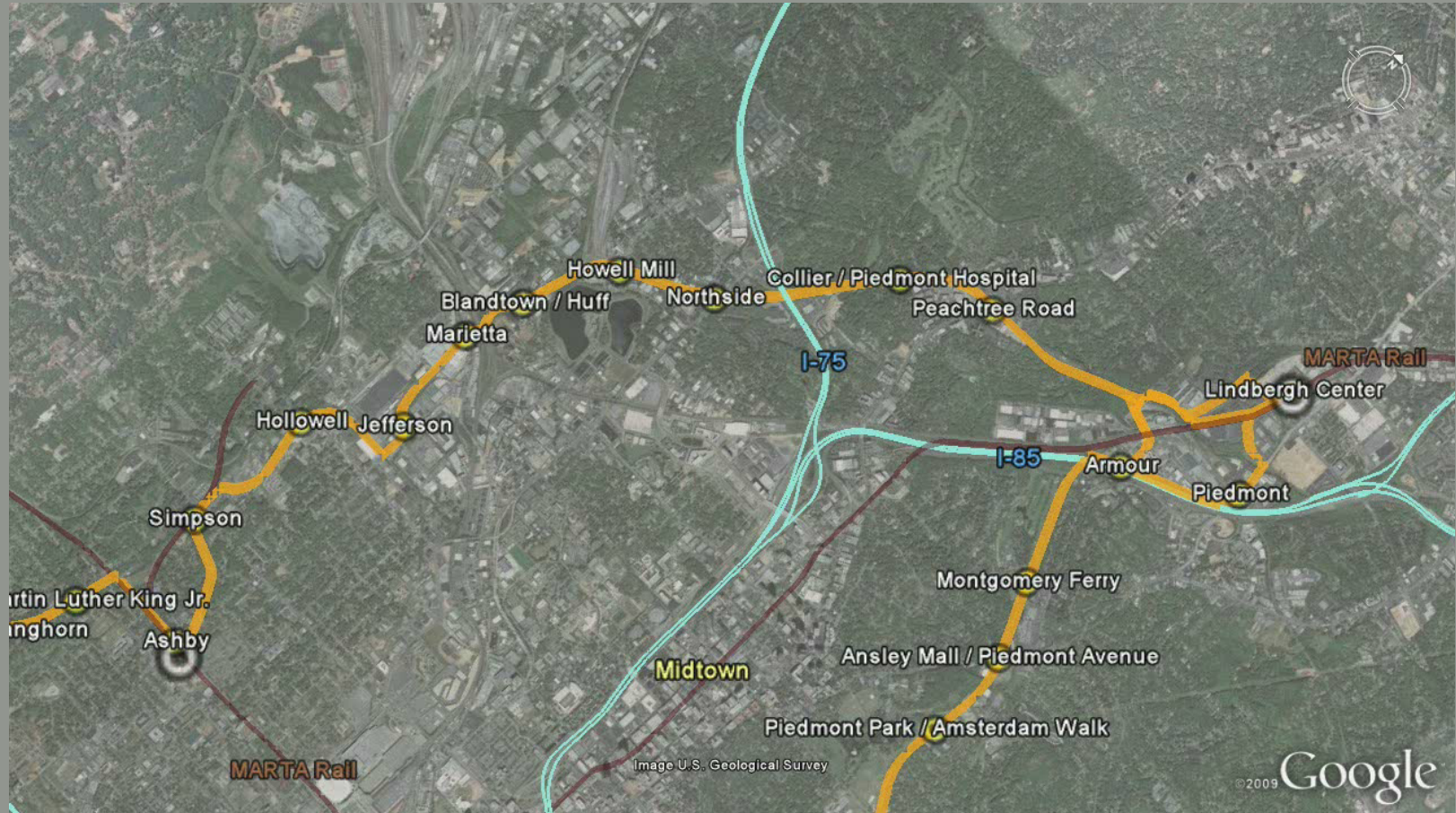
BeltLine Project Overview

Project Alignment and Station Locations



BeltLine Project Overview

Project Alignment and Station Locations



Breakout Session at Tonight's Workshop

Breakout Group Discussion Questions

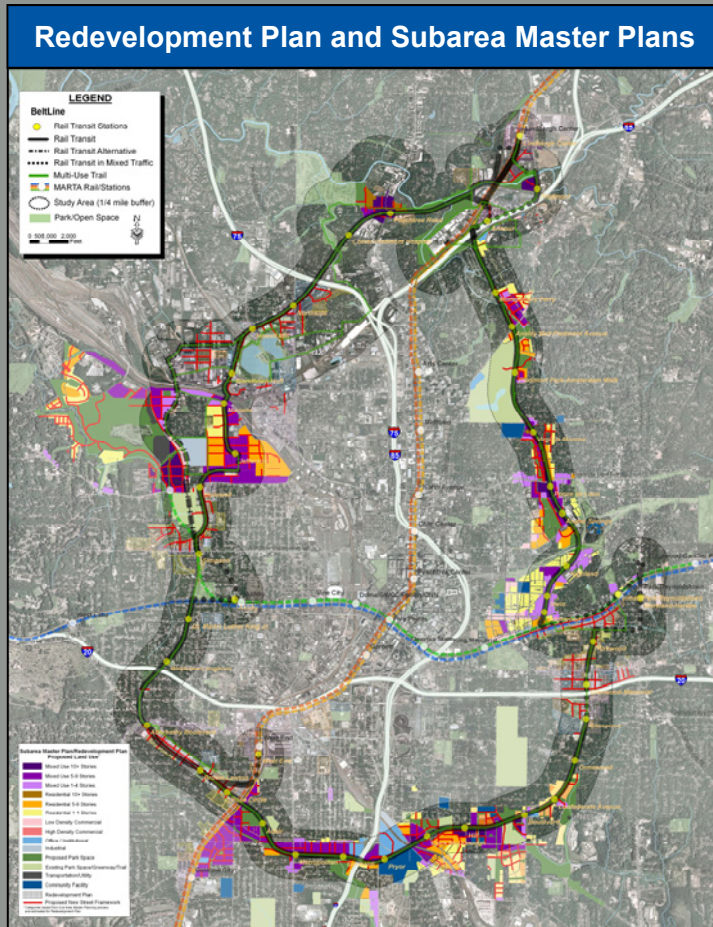


- **What type of transit service is best for the Beltline?**
 - Fewer stops with faster service?
 - More neighborhood access with slower service?

- **Are there other alignments and station areas for transit and trails we should consider?**

- **Issues and concerns we should consider in evaluating the project?**

Breakout Session at Tonight's Workshop



Breakout Group Resources

- Facilitator to lead discussion
- Staff to record comments
- Video, images and maps show proposed alignments
- Background on existing conditions and subarea master plans

BREAKOUT SESSION

BREAKOUT SESSION SUMMARIES

Breakout Session at Tonight's Workshop

How Will the Results of Tonight's Workshop be Used?



Next Steps

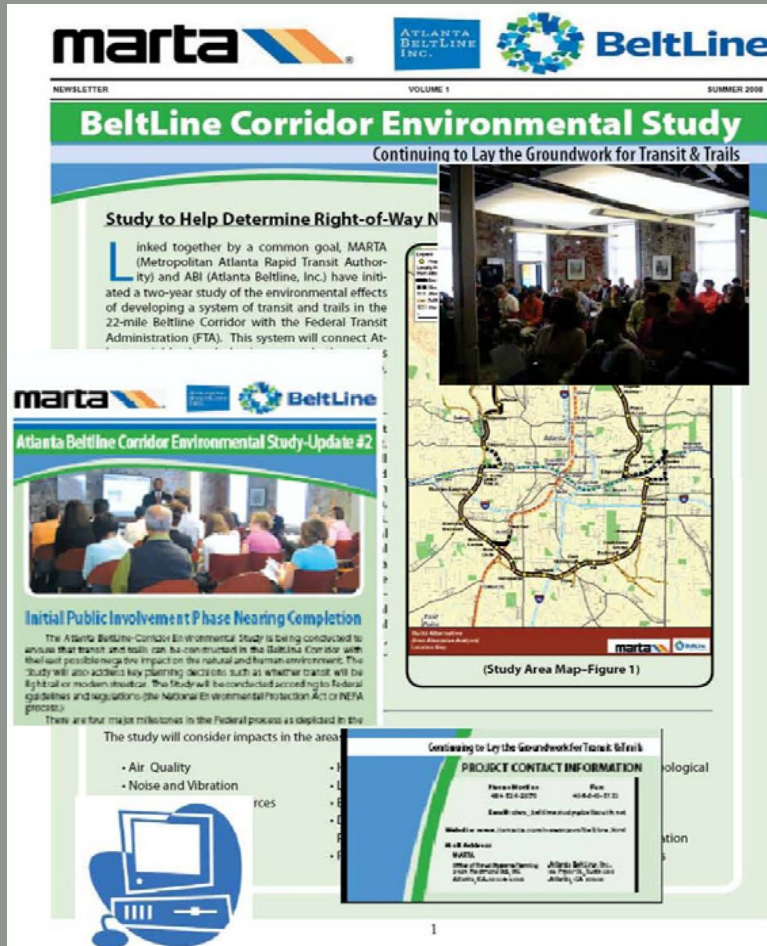
- Refine alternatives for EIS
- Identify alignment and station options for feasibility review
- Identify issues of concern for consideration in the EIS
- Incorporate results into the Evaluation of Alternatives
- Present the results to the public for more review and comment

Project Meetings



- **Technical Advisory Committee Meetings**
- **Stakeholder Advisory Committee Meetings**
- **Citywide Conversation of Transit and Trails Meeting**
- **Public Workshops**
 - April 13th Southeast
 - April 16th Northeast
 - April 23rd Southwest
 - April 27th Westside
 - May 4th Northside

How Can I Stay Involved?



▪ Future Workshops and Public Meetings

▪ Get on our Mailing List

▪ Project Newsletters

▪ Project Website

www.itsmarta.com/newsroom/beltline.html

▪ Comment Cards

Thank You For Your Time and Help on This Important Project!